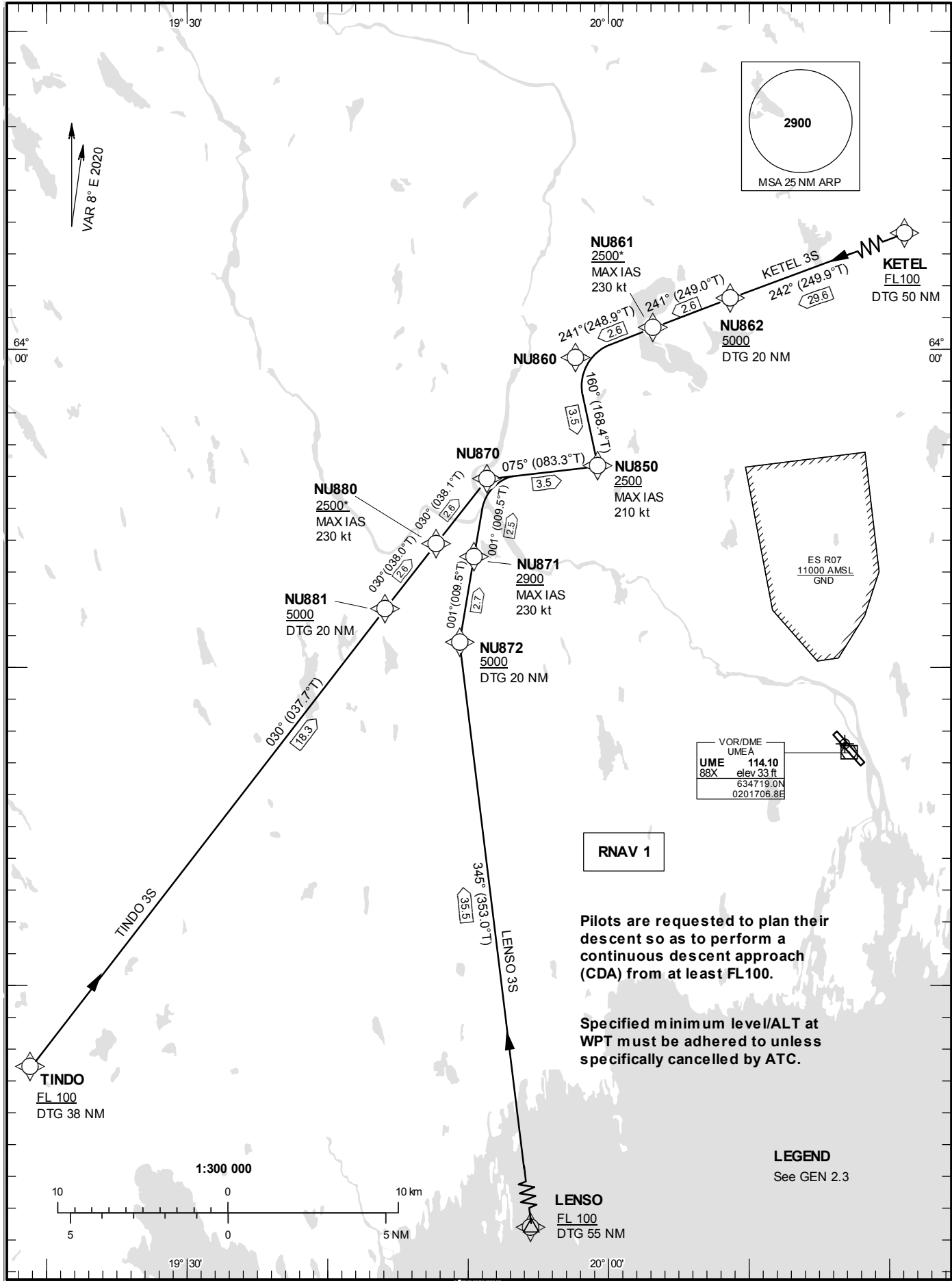


**STANDARD INSTRUMENT  
ARRIVAL CHART (STAR) -  
ICAO**

HGT and ALT in ft  
BRG are MAG (True)  
TA 5000 ft AMSL

UMEÅ TOWER 119.805

**RNAV (GNSS) STAR RWY 14**



CHANGE: Editorial

UMEÅ

**Prescribed Coding of RNAV STARs for RWY 14****REMARK**

RNAV 1 required.

In case of radio communication failure, see AD 2.22 para 2.

Pilots are requested to plan their descent so as to perform a continuous descent approach (CDA) from at least FL100.

Operators unable flying RNAV 1 shall inform ATC by using phraseology "UNABLE RNAV STAR". ATC will then provide vectors or issue clearance to a navigation aid in Umeå TMA.

**KETEL 3S**

Path Term	Waypoint Identifier	Fly-over	Course °M(°T)	Dist (NM)	Turn Dir	Rest Alts (ft AMSL)	Speed Limits (kt)	VPA/ RDH (°/ft)	Rec Navaid	Navigation Specification
IF	KETEL	-	-	-	-	+FL100	-	-	-	RNAV 1
TF	NU862	-	242°(249.9°)	29.6	-	+5000	-	-	-	RNAV 1
TF	NU861	-	241°(249.0°)	2.6	-	+2500	-230	-	-	RNAV 1
TF	NU860	-	241°(248.9°)	2.6	-	-	-	-	-	RNAV 1
TF	NU850	-	160°(168.4°)	3.5	-	+2500	-210	-	-	RNAV 1

STAR instruction: KETEL (FL100 or above) – NU862 (5000 ft or above) – NU861 (max IAS 230 kt, 2500 ft or above) – NU860 – NU850 (max IAS 210 kt, 2500 ft or above)

**LENSO 3S**

Path Term	Waypoint Identifier	Fly-over	Course °M(°T)	Dist (NM)	Turn Dir	Rest Alts (ft AMSL)	Speed Limits (kt)	VPA/ RDH (°/ft)	Rec Navaid	Navigation Specification
IF	LENSO	-	-	-	-	+FL100	-	-	-	RNAV 1
TF	NU872	-	345°(353.0°)	35.5	-	+5000	-	-	-	RNAV 1
TF	NU871	-	001°(009.5°)	2.7	-	+2900	-230	-	-	RNAV 1
TF	NU870	-	001°(009.5°)	2.5	-	-	-	-	-	RNAV 1
TF	NU850	-	075°(083.3°)	3.5	-	+2500	-210	-	-	RNAV 1

STAR instruction: LENSO (FL100 or above) – NU872 (5000 ft or above) – NU871 (max IAS 230 kt, 2900 ft or above) – NU870 – NU850 (max IAS 210 kt, 2500 ft or above)

**TINDO 3S**

Path Term	Waypoint Identifier	Fly-over	Course °M(°T)	Dist (NM)	Turn Dir	Rest Alts (ft AMSL)	Speed Limits (kt)	VPA/ RDH (°/ft)	Rec Navaid	Navigation Specification
IF	TINDO	-	-	-	-	+FL100	-	-	-	RNAV 1
TF	NU881	-	030°(037.7°)	18.3	-	+5000	-	-	-	RNAV 1
TF	NU880	-	030°(038.0°)	2.6	-	+2500	-230	-	-	RNAV 1
TF	NU870	-	030°(038.1°)	2.6	-	-	-	-	-	RNAV 1
TF	NU850	-	075°(083.3°)	3.5	-	+2500	-210	-	-	RNAV 1

STAR instruction: TINDO (FL100 or above) – NU881 (5000 ft or above) – NU880 (max IAS 230 kt, 2500 ft or above) – NU870 – NU850 (max IAS 210 kt, 2500 ft or above)